

Lighting the Way ~ Rejoicing in Our Journey

PUBLIC MEETING #1

Chatham Review Area
Pupil Accommodation Review Committee

November 9, 2016



ST. CLAIR CATHOLIC
DISTRICT SCHOOL BOARD

Lighting the Way ~ Rejoicing in Our Journey

Opening Prayer

Loving God,
You watch over us each moment of the day
and each season of life.
We have sensed Your faithfulness as individual families
when we have welcomed new members,
and through all of life's changes.
We, the St. Clair Catholic School Board family,
trust Your guidance now as we gather information
that might call us to make changes that are necessary
yet difficult.

All together: The Serenity Prayer

*God, grant me the serenity to accept the things I cannot change;
The courage to change the things I can;
and the wisdom to know the difference.
Amen.*

Our Mission

Walking together in Christ's light with parish and family, we are called to build a safe and inclusive Catholic learning community and to serve as partners in the formation of life-long learners by:

- ▶ Living our faith;
- ▶ Promoting educational achievement and innovation;
- ▶ Fostering stewardship, leadership, and social justice

Norms for Working Together

- ▶ Everyone has wisdom and insight. Everyone's insight is required for the wisest result.
 - ▶ Be active, say what's important to you.
- ▶ Everyone will hear others and be heard. Everyone has an equal voice.
 - ▶ Listen to understand, then speak from your head and your heart.
- ▶ There are no wrong answers or bad questions.
 - ▶ If you are thinking it, likely others are thinking this too.
- ▶ Respect each other's ideas and thoughts
 - ▶ All ideas and thoughts are valid, even if we have opposing ideas and thoughts

AGENDA

1. Getting Acquainted
2. Overview of the Pupil Accommodation Review Process
3. Introduction of the PARC Members & Mandate of the PARC
4. The proposed Recommendation Options
5. Feedback gathered from local communities to date
6. Your reaction, feedback and questions

Getting Acquainted

- ▶ Everyone here tonight has an important voice
- ▶ Meet with two other community members you do not know and share:
 - ▶ Name and school you are associated with
 - ▶ One key message you want to express or one key question you want answered

Pupil Accommodation Review Process

- ▶ Background : January 26, 2016, Board of Trustees approved amendments to Board Policy, Section B: Administration - *Student Accommodation & Boundary Review*
- ▶ Long-Term Capital Plan 2016 - 2021 (LTCP) presented February 26, 2016 - identifies the accommodation needs of the Board (new schools, additions, boundary review, areas under capacity). The LTCP also sets out “Guiding Principles” to ensure that the SCCDSB provides equitable, affordable and sustainable learning facilities.
- ▶ The Chatham Elementary Schools planning area has been identified as **significantly under capacity** in 2015-2016 with predicted further decline



Pupil Accommodation Review Process

- ▶ Areas identified as significantly under capacity require a reduction in pupil places which would entail a Pupil Accommodation Review. Staff recommended the commencement of a Pupil Accommodation Review.
- ▶ September 27, 2016 - As required by the Ministry of Education, Board staff prepared an **Initial Staff Report** identifying a number of scenarios. Boards are required to identify a preferred option of school(s) to be closed.
- ▶ No decisions have been made with respect to the options presented.
- ▶ The Board of Trustees makes the FINAL decision on the outcome of the Pupil Accommodation Review.

Mandate of the “PARC”

Pupil Accommodation Review Committee:

- ▶ represents the Schools under review
- ▶ official conduit for information shared between the school board and the schools
- ▶ may comment on the Initial Staff Report
- ▶ may seek clarification of the Initial Staff Report
- ▶ may provide other accommodation options than those included in the Initial Staff Report; however, it must include supporting rationale consistent with the Capital Plan’s “Guiding Principles” for any such option
- ▶ The PARC members do not need to achieve consensus regarding the information provided to the Board of Trustees.
- ▶ **Final decision is made by Board of Trustees**

Membership of PARC:

- ▶ From each school under review:
 - ▶ a parent/guardian
 - ▶ a school administrator
 - ▶ a community representative
- ▶ Director designated supervisory officer to facilitate and chair PARC meetings
- ▶ Trustees are observers only

Chatham PARC Membership

▶ Our Lady of Fatima

- ▶ Brian Knowler- Parent Council Rep.
- ▶ Karen Robert - Community Rep.

▶ Monsignor Uyen

- ▶ John Mariconda - Parent Council Rep.
- ▶ Ron Male - Community Rep.

▶ St. Agnes

- ▶ Anita Hudson - Parent Council Rep.
- ▶ Jen Thomas - Community Rep.

▶ St. Vincent

- ▶ Taera VanRoboys - Parent Council Rep.
- ▶ Pat Forster - Community Rep

▶ Georges P. Vanier

- ▶ Christine Canniff - Parent Council Rep.
- ▶ Lucy Haggeman - Community Rep.

▶ St. Joseph

- ▶ Amy Finn - Parent Council Rep.
- ▶ Darlene Normandin - Community Rep

▶ St. Ursula

- ▶ Tracey Basso - Parent Council Rep.
- ▶ Renee Handsor - Community Rep.

Process: Board announces Pupil Accommodation Review

1. First Public Meeting: November 9, 2016
2. PARC must hold at least two working meetings which are open to the public.
 - ▶ PARC meeting #1 - October 4, 2016
 - ▶ PARC meeting #2 - November 29, 2016
3. Second Public Meeting: January 25, 2017
4. Final Staff Report to Board: February 14, 2017
5. Public Delegations to Board : February 28, 2017
6. Final Report to the Board: March 28, 2017

Communication:

- ▶ Agendas posted on Board Website
- ▶ Notes are posted on the Board website
- ▶ Questions and answers shared with PARC and then posted on website

What if?

- ▶ If the Board passes a motion to close a school, clear details around school closure dates and boundary revisions will be provided on the Board's website.
- ▶ The Board will establish a **Transition Committee** to address the transition of students and staff
- ▶ The Principal will meet with the School Council to discuss the implementation process.
- ▶ A Superintendent will work with the Principal and School Council to facilitate a smooth transition process.
- ▶ The Principal will ensure that student learning remains the focus of the staff in the months following the decision to close.
- ▶ The Principal will arrange visits and orientation activities with the Principals of the receiving schools in May and June.
- ▶ There will be a commitment to student learning throughout the entire process.

Introductions

- ▶ Board Staff
 - ▶ Board staff from various areas of responsibility, such as School Superintendents, School Principal(s), Finance, Facilities, Transportation and Planning may be assigned to act as resources to the PARC.
- ▶ Parish Staff - Fr. Jim Higgins

LTCP Guiding Principles - SCCDSB is committed to:

- ▶ Provide and maintain quality learning and teaching environments that support student achievement and well-being (SCCDSB Strategic Plan 2015-2016)
- ▶ Optimal utilization rates in the range of 90-110%
- ▶ Allow for personalized learning, pathways, school specializations, cluster and community support
- ▶ Scheduled length of time on a vehicle provided by CLASS will not exceed 60 minutes (one-way elementary) or 75 minutes (one-way secondary)
- ▶ Schools meet the needs of 21st Century
- ▶ Accessibility needs are met

LTCP Guiding Principles cont.

- ▶ Neighborhood and community access to support well-being of students and their families (child care, community agencies, Community Use of Schools)
- ▶ Flexible learning environments with adaptive/flexible use of spaces

ELEMENTARY:

- ▶ School Capacity - optimal 400 to 600 students (2-3 classes of each grade)
- ▶ School Grade/Organization - Kindergarten to Grade 8
- ▶ School Site Size - optimal approx. 6 to 8 acres

School Information Profiles: Facility Condition Index

- ▶ Analysis of system components of school buildings - architectural, mechanical, electrical, plumbing elements
- ▶ Identifies LIFECYCLE - estimated number of years the component will function in proper condition
- ▶ 5-year renewal needs - total cost for repair or replacement of components which have 5 or fewer years of service life remaining

Enrolment Projection calculations:

- ▶ Baragar Systems: Historical school community + new students from residential development
- ▶ Year by year, grade by grade progression of students
- ▶ Retention rates - gains and losses as students move thru grades at a school
- ▶ Student enrolment revised annually
- ▶ Trends: Historical enrolment, population forecasts, Census and birth data

Planning Area Overview

School Name	OTG	2016 Enrolment	2016 Utilization	Original Construction	FCI	Site Size (acres)
Georges P. Vanier	259	255	98.5%	1967	44.5%	4.99
Monsignor Uyen	354	326	92.1%	1968	31.2%	4.50
Our Lady of Fatima	420	354	84.3%	1978	35.6%	9.24
St. Agnes	187	123	65.8%	1959	56.6%	2.10
St. Joseph	210	109	51.9%	1955	57.9%	1.75
St. Ursula	374	236	63.1%	1958	50.4%	4.40
St. Vincent	210	181	86.2%	1957	47.2%	6.60
Total	2,014	1,584	78.6%		44.9%	

Accommodation Issues

Enrolment and Utilization

- ▶ 78.6% with current surplus of 430 pupil places (500 forecasted)
- ▶ Distribution of students across schools is not equal (St. Agnes, St. Joseph & St. Ursula have low utilizations)
- ▶ Many of Chatham schools are “SMALL”

GOAL: to achieve a better distribution of students and higher utilization of schools

Accommodation Issues

Facility Size and Condition:

Small Schools

- ▶ Enrolment-based funding
- ▶ Challenging to staff
- ▶ Challenging to organize
- ▶ Challenging for supervision, PD, collaborations, extra-curriculars

Age of Schools

- ▶ Average age 50+ years (except OLOF)
- ▶ Reaching end of lifecycle - FCI >50% in 3 schools

Accommodation Issues

Meeting Program Needs and Accessibility Standards:

- ▶ Space benchmarks for instructional and operational spaces for 21st Century
- ▶ Majority of schools do not meet accessibility standards and current expectations for teaching and learning environments

Pupil Accommodation Review

Options will:

- ▶ Eliminate surplus pupil places and outdated school facilities
- ▶ Increase overall utilization in the review area
- ▶ Upgrade teaching and learning environments
- ▶ Align with LTCP's objectives
- ▶ Include a "preferred option"

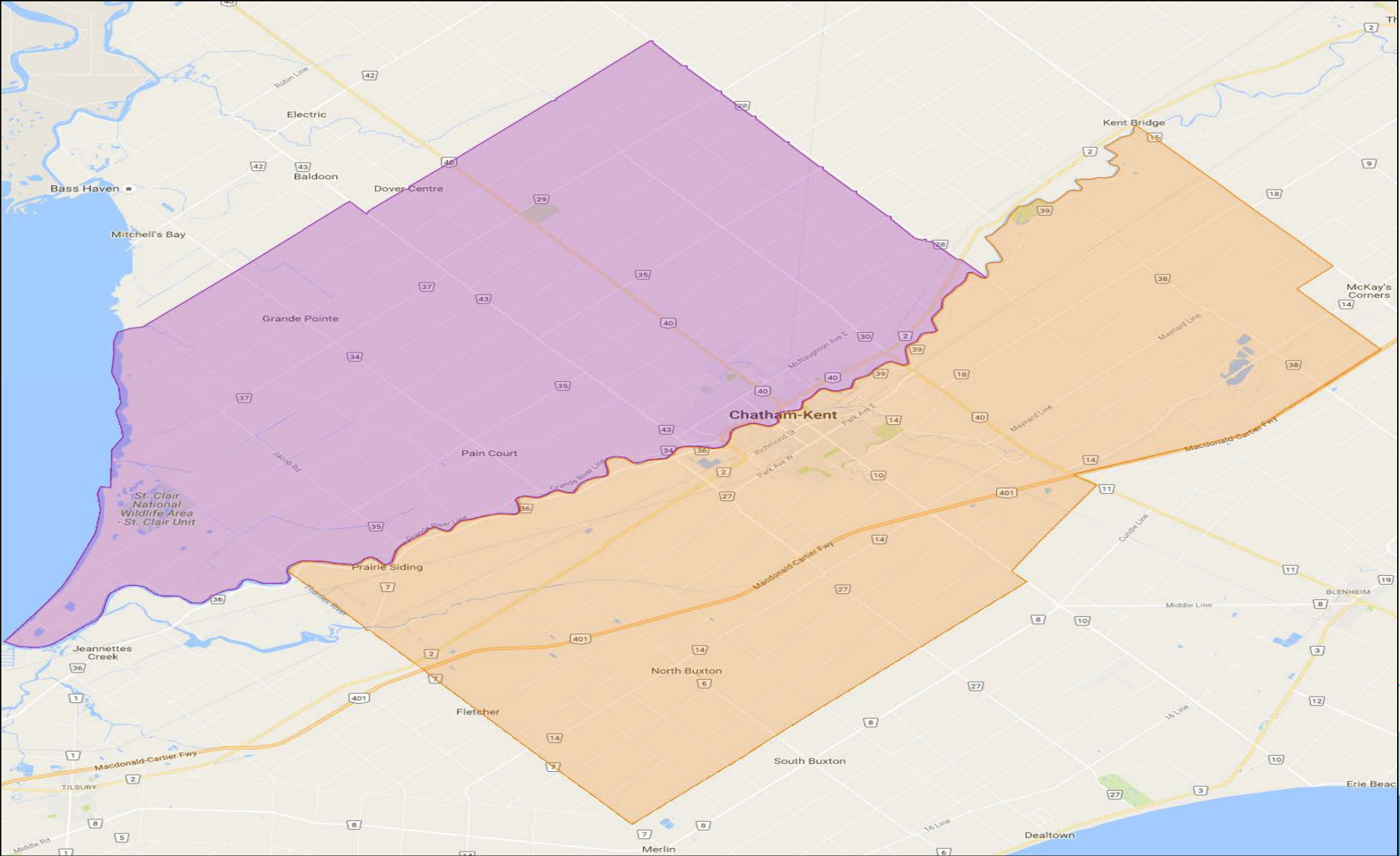
Option A (Preferred option)

- ▶ **New Construction - 500 pupil place JK - 8 English school in North Chatham (Our Lady Of Fatima, St Agnes, St. Vincent)**
- ▶ **New Construction - 550 pupil place JK - 8 English school in South Chatham (Georges P. Vanier, St. Joseph, St. Ursula)**
- ▶ **CLOSE 6 Schools: Georges P. Vanier, Monsignor Uyen, St. Agnes, St. Joseph, St. Ursula, St. Vincent**
- ▶ **New builds will include Child Care Facilities**
- ▶ **Address outstanding school renewal issues at Our Lady of Fatima (Monsignor Uyen students move to Our Lady of Fatima)**
- ▶ **Complete for September 2019**

Option A (Continued):

- ▶ Busing increases from 60.1% to 69.1%
- ▶ Redefine boundaries for the two new schools
- ▶ Change Boundaries city and county - some students redirected to Good Shepherd, St. Anne Blenheim, St Joseph Tilbury (approx. 20)

Option A - Proposed School Boundaries



Option A - Capital Investment

CAPITAL ASSET	PROJECT DESCRIPTION	COST
North Chatham School	New Build	\$12,080,104
South Chatham School	New Build	\$12,965,739
Our Lady of Fatima	5-Year Renewal Needs	\$2,951,377
	Renewal Needs > 5 Years	\$506,918
	Board Identified Needs	\$250,000
Vacant Property	Site Acquisition	\$1,000,000
		\$29,754,138

Option A - Projected Enrolment & Capacity Utilization

School Name	OTG 2019	2019	2020	2021	2022	2023	2024	2025
Our Lady of Fatima (French Immersion)	420	377	394	407	414	428	429	423
		89.8%	93.8%	96.9%	98.6%	101.9%	102.1%	100.7%
North Chatham School	500	549	534	512	502	492	481	476
		109.8%	106.8%	102.4%	100.4%	98.4%	96.2%	95.2%
South Chatham School	550	589	584	586	582	578	571	592
		107.1%	106.2%	106.5%	105.8%	105.1%	103.8%	107.6%
Total	1,470	1,515	1,512	1,505	1,498	1,498	1,481	1,491
		103.1%	102.9%	102.4%	101.9%	101.9%	100.7%	101.4%

Option A - Guiding Principles

School	North Chatham School	South Chatham School	Our Lady of Fatima
JK-8 School	Yes	Yes	Yes
Facility Utilization (90-110%)	Yes	Yes	Yes
OTG (400-600 students)	Yes	Yes	Yes
Small Schools (<150)	No	No	No
Fully Accessible	Yes	Yes	Yes
Transportation < 60 Mins	Yes	Yes	Yes
Site Size (6-8 Acres)	TBD	TBD	9.24

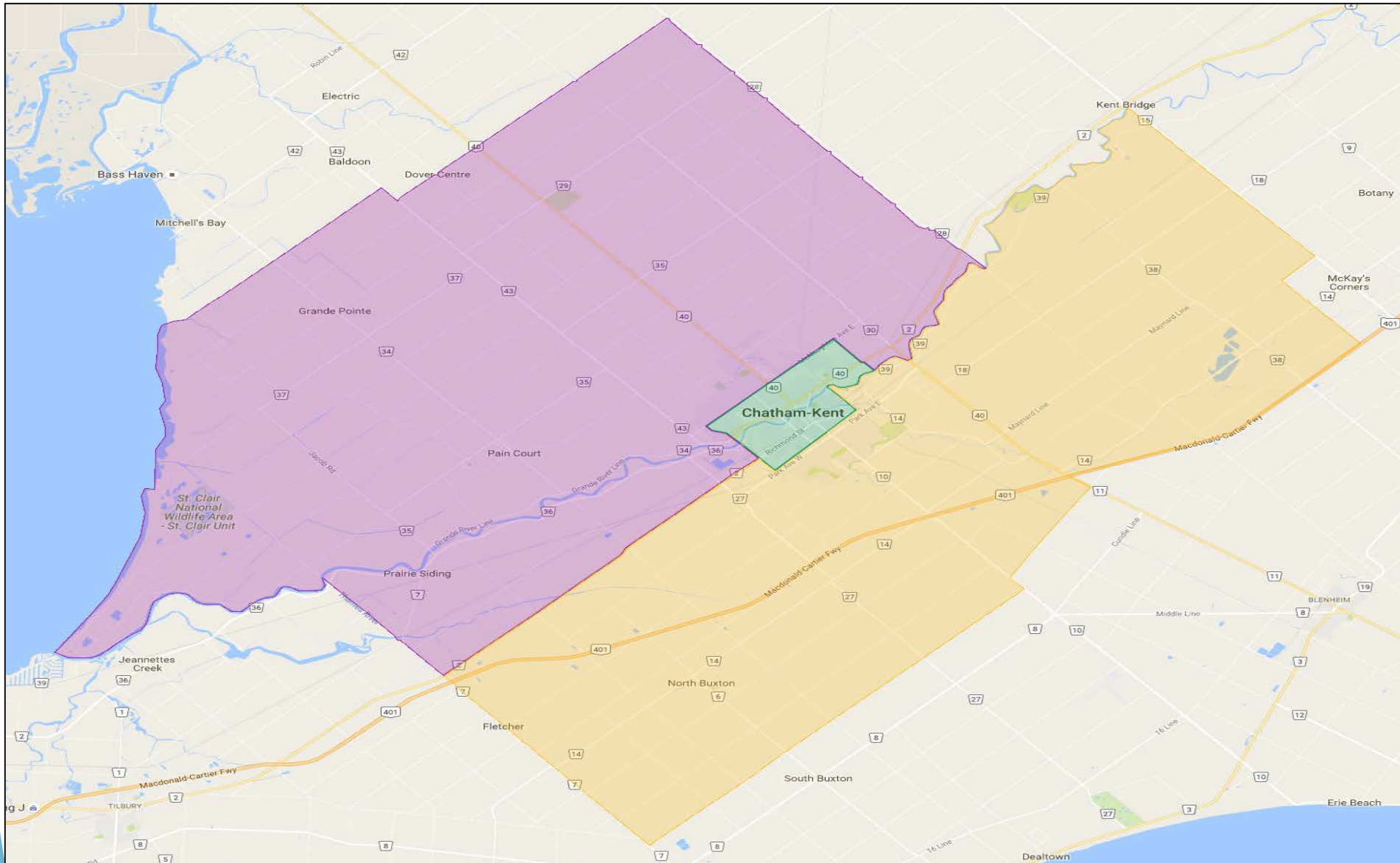
Option B

- ▶ **New Construction - 300 pupil place JK- 8 English school in North Chatham (Our Lady Of Fatima, St. Vincent)**
- ▶ **New Construction - 500 pupil place JK - 8 English school in South Chatham (Georges P. Vanier, St. Ursula, some St. Joseph)**
- ▶ **New Builds will include Child Care Facilities**
- ▶ **CLOSE 5 Schools: Georges P. Vanier, St. Agnes, St. Joseph, St. Ursula, St. Vincent**
- ▶ **Complete for September 2019**
- ▶ **Address outstanding school renewal issues at Our Lady of Fatima (Monsignor Uyen students move to Our Lady of Fatima)**
- ▶ **Address outstanding school renewal issues at Monsignor Uyen (St. Agnes, some St. Joseph)**
- ▶ **Completion Date TBD**

Option B - Accommodation Plan

- ▶ Change Boundaries city and county - some students redirected to Good Shepherd, St. Anne Blenheim, St Joseph Tilbury (approx. 20)
- ▶ Busing increases from 60.1% to 69.9%

Option B - Proposed School Boundaries



Option B - Projected Enrolment & Capacity Utilization

School Name	OTG 2019	2019
Our Lady of Fatima (French Immersion)	420	377
		89.8%
North Chatham School	300	333
		111.0%
South Chatham School	500	493
		98.6%
Monsignor Uyen	354	312
		88.1%
Total	1,574	1,515
		96.3%

Option B - Capital Investment

CAPITAL ASSET	PROJECT DESCRIPTION	COST
North Chatham School	New Build	\$8,690,435
South Chatham School	New Build	\$12,080,104
Our Lady of Fatima	5-Year Renewal Needs	\$2,951,377
	Renewal Needs > 5 Years	\$506,918
	Board Identified Needs	\$250,000
Monsignor Uyen	5-Year Renewal Needs	\$2,471,932
	Renewal Needs > 5 Years	\$581,646
	Board Identified Needs	\$2,480,000
Vacant Property	Site Acquisition	\$1,000,000
		\$31,012,412

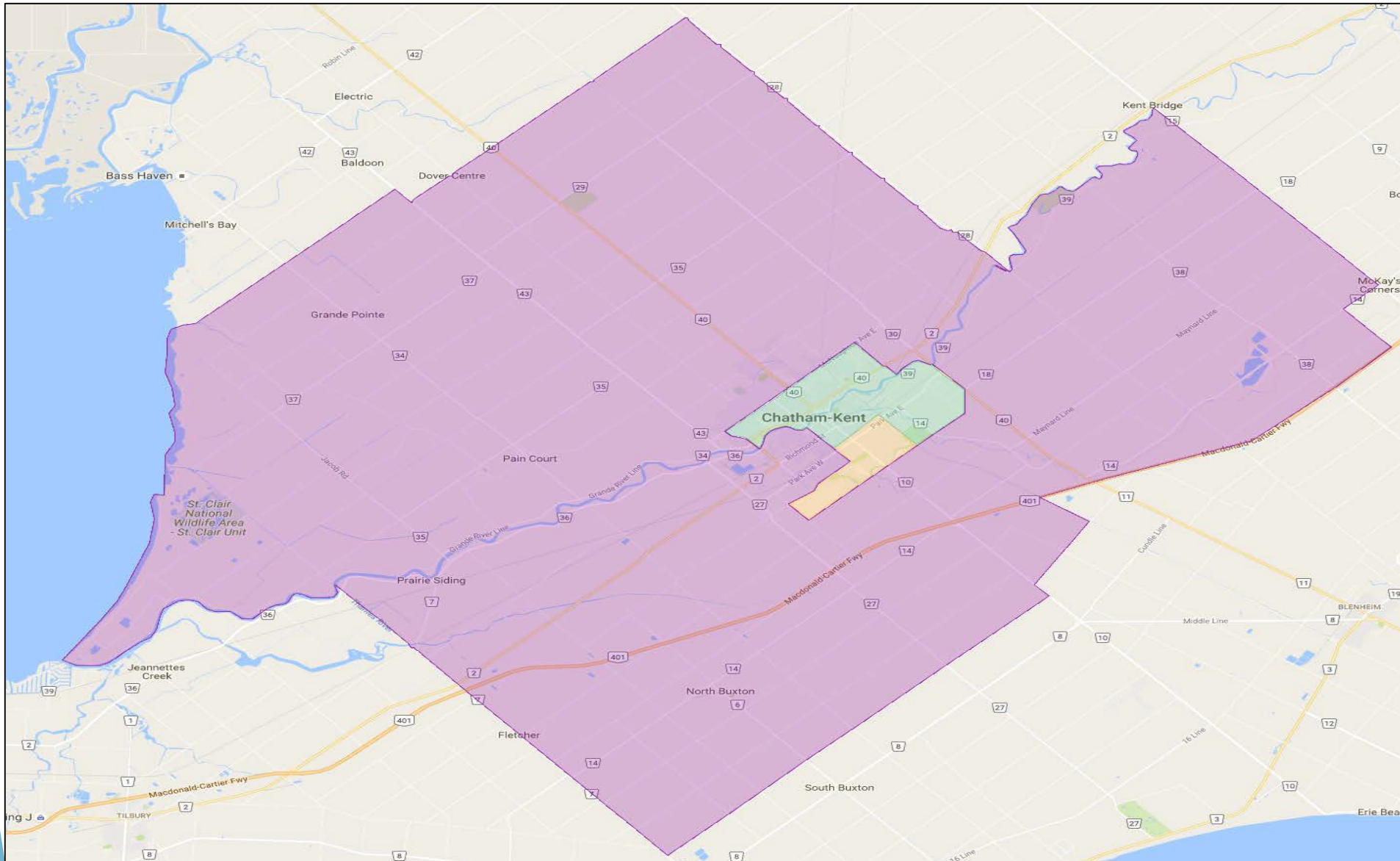
Option B - Guiding Principles

School	North Chatham School	South Chatham School	Monsignor Uyen	Our Lady of Fatima
JK-8 School	Yes	Yes	Yes	Yes
Facility Utilization (90-110%)	Yes	Yes	No	No
OTG (400-600 students)	No	Yes	No	Yes
Small Schools (<150)	No	No	No	No
Fully Accessible	Yes	Yes	Yes	Yes
Transportation < 60 Mins	Yes	Yes	Yes	Yes
Site Size (6-8 Acres)	TBD	TBD	4.50	9.24

Option C

- ▶ New Construction - 600 pupil place JK-8 English school in North Chatham (including Child Care Facilities)
- ▶ Complete for September 2019
- ▶ CLOSE 4 Schools: St. Agnes, St. Joseph, St. Ursula, St. Vincent
- ▶ Develop a Multi-Year Plan to renovate Our Lady of Fatima, Monsignor Uyen and Georges P. Vanier
- ▶ Completion Date TBD
- ▶ Redefine boundaries in city and county - some students redirected to Good Shepherd, St. Anne Blenheim, and St. Joseph Tilbury as well as changes for students in Chatham English schools
- ▶ Busing increases from 60.1% to 75.8%

Option C - Proposed School Boundaries



Option C - Projected Enrolment & Capacity Utilization

School Name	OTG 2019	2019
Our Lady of Fatima (French Immersion)	420	377
		89.8%
North Chatham School	600	600
		100.0%
Monsignor Uyen	354	293
		82.8%
Georges P. Vanier	259	245
		94.6%
Total	1,633	1,515
		92.8%

Option C - Capital Investment

CAPITAL ASSET	PROJECT DESCRIPTION	COST
North Chatham School	New Build	\$13,943,097
Our Lady of Fatima	5-Year Renewal Needs	\$2,951,377
	Renewal Needs > 5 Years	\$506,918
	Board Identified Needs	\$250,000
Monsignor Uyen	5-Year Renewal Needs	\$2,471,932
	Renewal Needs > 5 Years	\$581,646
	Board Identified Needs	\$2,480,000
Georges P. Vanier	5-Year Renewal Needs	\$2,780,907
	Renewal Needs > 5 Years	\$334,934
	Board Identified Needs	\$650,000
Vacant Property	Site Acquisition	TBD
		\$26,950,811

Option C - Guiding Principles

School	North Chatham School	Monsignor Uyen	Georges P. Vanier	Our Lady of Fatima
JK-8 School	Yes	Yes	Yes	Yes
Facility Utilization (90-110%)	Yes	No	Yes	No
OTG (400-600 students)	Yes	No	No	Yes
Small Schools (<150)	No	No	No	No
Fully Accessible	Yes	Yes	Yes	Yes
Transportation < 60 Mins	Yes	Yes	Yes	Yes
Site Size (6-8 Acres)	TBD	4.50	4.99	9.24

Table Discussions - Seeking Your Feedback

- ▶ Provides everyone with an opportunity to have your voice heard
- ▶ Opportunity to hear ideas and reactions from other community members
- ▶ Maximize the amount of feedback that will be recorded and shared with the Board of Trustees
- ▶ Everyone can contribute to finding the best solution

12 Key Themes - Café Style Conversations

School Organization & Programming

Classes / Class Size

Facilities

Sports

Students

French Immersion

Staffing

Community Partners

Sense of Community

Transportation

Religion

Budget / Costing

Options for providing additional feedback

- ▶ Contact the PARC Member Representatives for your School
- ▶ Send your feedback through the St. Clair Catholic District School Board website
- ▶ Attend the second Public Meeting Scheduled for January 25, 2017

Closing Prayer

Holy Trinity;

We thank You for Your example of unity.

Unite us in our efforts

to provide loving and faith-filled homes, schools and parishes
for the children in our care.

We thank You for this meeting

and for the passion each person present has for Catholic Education.

We thank You for the ideas and concerns shared here
and we ask for Your wisdom in the time ahead.

Bless our travel home

and bless our cherished families.

Amen